

Technical Specifications

Meteor Digital Printing 30/60

Maximum speed (1 Print Group)		Maximum speed (2 Print Group)	
30 pages/minute	A4L, Letter L	60 pages/minute	A4L, Letter L
21 pages/minute	A4C, Letter C	42 pages/minute	A4C, Letter C
15 pages/minute	A3 , 11x17	30 pages/minute	A3 , 11x17
15 pages/minute	A3 ++ , 13x18	30 pages/minute	A3 ++ , 13x18

Print resolution:

200 LPI
Offset type frame - Resolution 1800 Dpi

Color Management:

ICC/ICM, SWOP and Euroscale profiles. PANTONE certification. Integrated Automatic Calibration and External calibration with DTP41 spectrodensitometer.

Standard Interface:

IEEE 1284 interface (Compatible/Nibble/ECP, Ethernet (10BaseT/100BaseTX))

Protocols supported:

AppleTalk, EtherTalk, TC/IP, IPP, HTTP, IPX/SPX

Software:

Integrated RIP / Print Station Manager with professional colorimetry management - CMYK and RGB Profiles. Colorimetry Calibration software using a DTP41 Print queue management utilities. On-Demand re-printing. Management of printed jobs and jobs to be printed.

Genebase – Software suite:

- > Variable data processing software, automatic numbering, bar code management, text and image/database import.
- > Bar code database generation software (EAN 8, EAN 13, Code 39, 2/5 industrial, UPC, etc.) via automatic numeric or alpha-numeric increments
- > Multi-layout and automatic imposition software

PostScript Level 3 Driver (French and English)

For PC for Windows 98, Me, NT, XP, 2000 and PPD for Mac)S 8.x OS 9.x OS X

Paper management by print group:

1 large capacity loader and 3 Input Trays.
Large-capacity loader-up to 300 Gsm-170 Lb Index-100 lb Cover.
Suction sheet feeder (gripping via vacuum pick-up suction system and transport via suction strip)

Capacity: up to 2400 sheets.

Minimum sheet format: 260 mm x 390 mm (10.2 x 15.3)

Maximum sheet format: 330 mm x 457 mm (13" x 18")

Manual Front/Back up to 300 gsm / 170 lb. Index

Input Tray No. 1:

from **64 Gsm (18 Lb. Bond to 142 Lb. Index)** with a capacity of **250 sheets**
Accepts formats from **86 x 140 mm (3.4" x 5.5") to 311 x 457 mm (12" x 18")**

A4, Letter, Legal, 8 fi" x 14", Executive, 8"x10", 11"x17", 12"x18", 12.85"x18" A3 Wide+ Automatic front/back module for substrates from 64 Gsm to 90 Gsm (18 to 24 Lb. Bond) without storage.

Input Tray No. 2:

From **80 Gsm to 140 Gsm (24 Lb. Bond to 75 Lb Index)** with a capacity of up to 500 sheets.

Accepts formats from 182x182 mm (7.1" x 7.1") to 297 x 432 mm (11.7 x 17") A4, Letter, Legal, 8 fi" x 14", Executive, 8"x10", 11"x17" Tabloid, A3 wide

Input Tray No. 3:

Capacity: Up to **2500 A4 sheets** (80 Gsm – 20 Lb. Bond)

Maximum Paper Format:

320 mm x 457 mm or (12.6" x 18")

Maximum print format:

304.8 mm x 431.8 mm (or 12" x 17")

Feedboard – Offset feeder

- > High adjustment precision (± 0.2 mm)
- > Ultrasound double sheet detection system
- > Automatic ejection trap for double fed sheets

Printing output

- > Extraction of printed sheets via micro-conveyor belt
- > Jogging table receives printing output.

Electrical power

100V model: 100 VAC ± 10%; 50/60 Hz ± 3%
120V model: 120 VAC ± 10%; 50/60 Hz ± 3%
220/240V model: 220/240 VAC ± 10%; 50/60 Hz ± 3%, Consumption: 1,500 W maximum

Air supply: Required / Compressor (Not supplied)

200 liters minimum supply tank, 8 Bars continuous
Minimum flow rate of 180 liters/min. (60 gallons, 100 PSI, 10 CFM)

Environmental characteristics

Required operating temperature:

10° to 30° C (50 F to 86 F)

In standby mode: 0° to 35° C (33 F to 95 F)

Relative Humidity level during operation:

38% to 60% RH

Regulations / Safety standards

UL, CUL, FCC-B, DOC, VCCI, EC Marking, C-Tick, CDRH, GOST

Mac and PC compatible

All CAP, CMYK or RGB applications :

X-Press, Illustrator, PhotoShop, Corel Draw, etc.

Specific Technical Characteristics

Footprint (with feedboard):

2200 mm x 700 mm x 1000 mm (W x H x D)

86.6" x 27.55" x 39.4"(W x H x D)

Substrates

PAPER:

Wide range of paper substrates from **64 Gsm –18 Lb. Bond to 300 Gsm – 170 Lb. Index -100 lb. Cover** (Bristol, Matte, Glossy, Coated, Kromcoat, Linen, Art-Textured, CS1/2)

PLASTIC:

PVC (.12 mils or 300 µ), Polyester, Polycarbonate, Lexan®, P.E.T., Autotype®, Vinyl, Teslin®, Melinex®

Options

Finishing modes:

Stapler, Sorter, Perforation, Fold and Saddle stitch, etc.

Scanner:

2400 dpi resolution

RJK Nouveaux Mondes (33) 1 41 49 66 66 - Crédit photos : Corbis, RJK

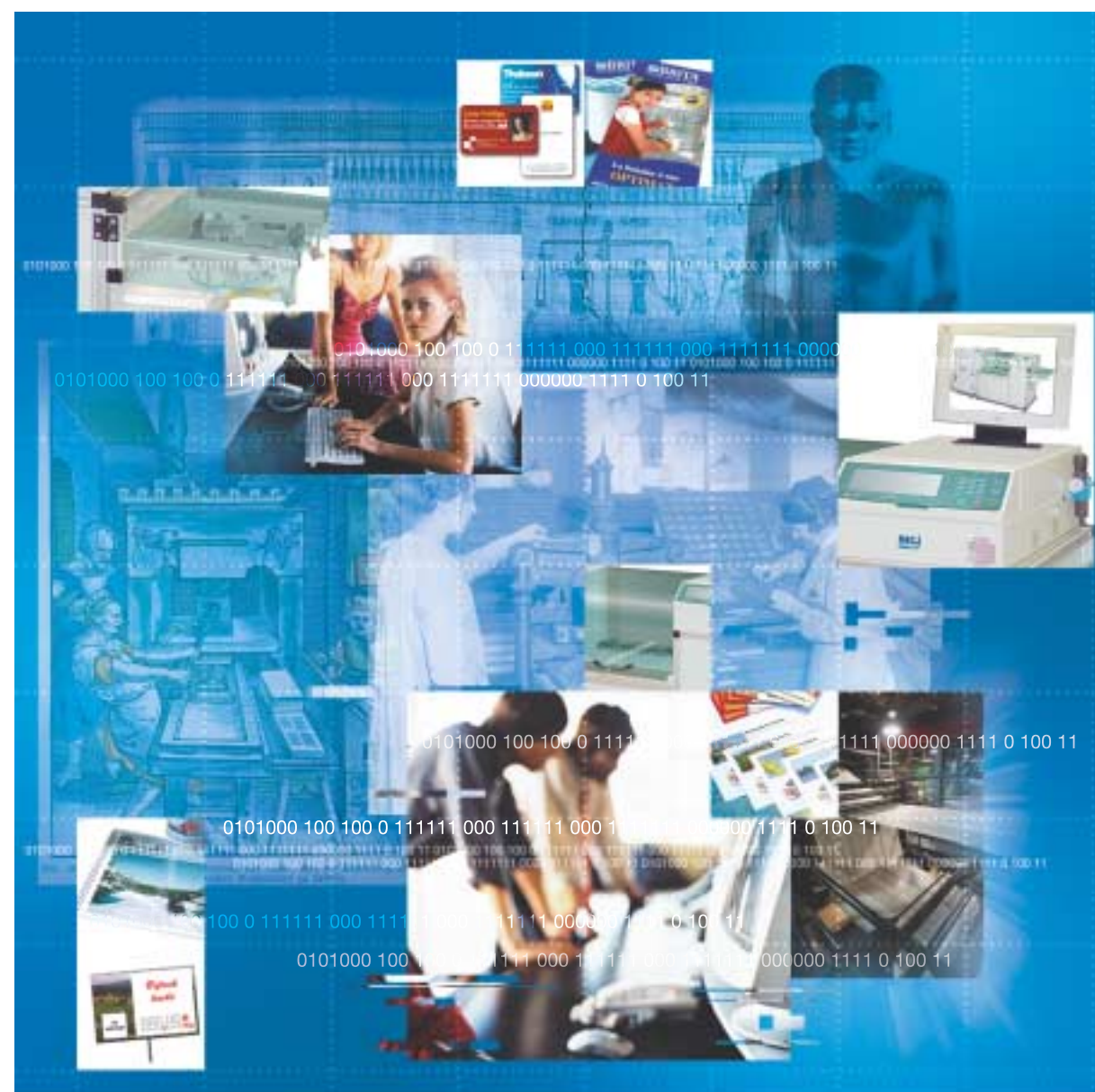
MGI

digital graphic technology

METEOR DP30/60

"We revolutionize Digital Thinking."

The technological convergence of Digital and Offset printing



MGI
digital graphic technology

Americas/Caribbean/Asia Pacific

1600 Sarno Road, Suite 118
Melbourne, FL 32935 - USA
Tél: 1-321-751-6755
Fax: 1-321-751-6777
mgiusa1008@aol.com
www.mgi-usa.com

Authorized Distributor



MGI
digital graphic technology

Europe /Middel East/ Africa

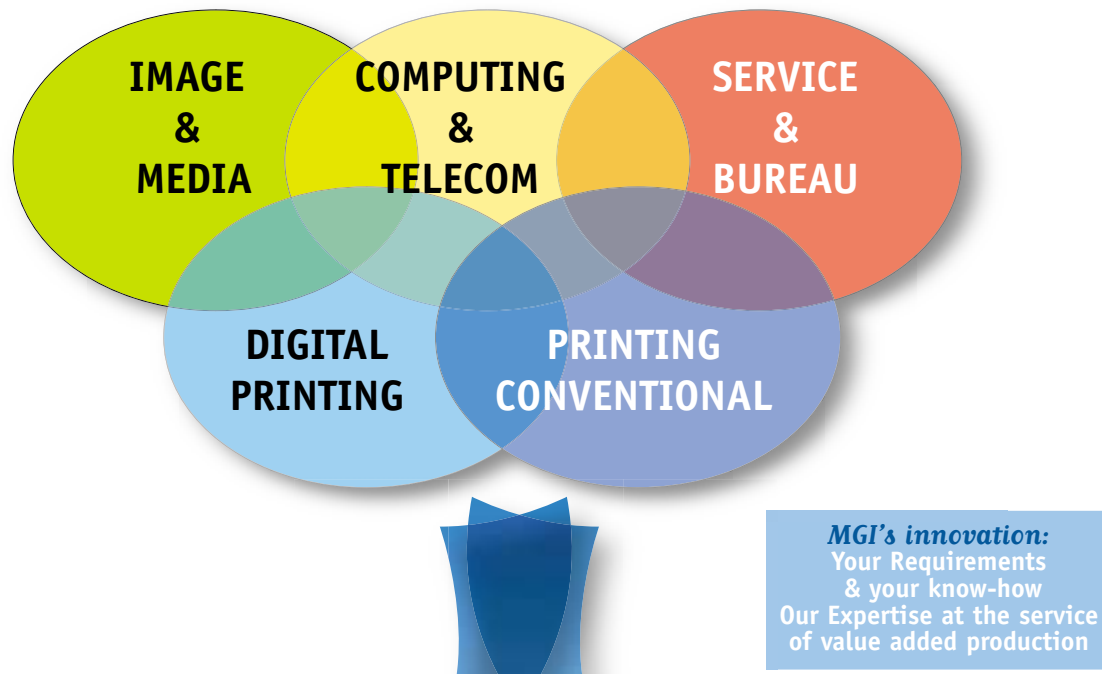
161 Avenue de Verdun
94204 IVRY/SEINE Cedex
Tél : (33) 1.45.21.06.60
Fax : (33) 1.45.21.14.90
info@mgi-fr.com
www.mgi-fr.com

All the other trademarks cited are marks registered by their respective manufacturers.
Pre-release booklet for information only. Non-contractual documents subject to modifications.

Multi-Substrates Paper & Plastic Digital Color Printing Press

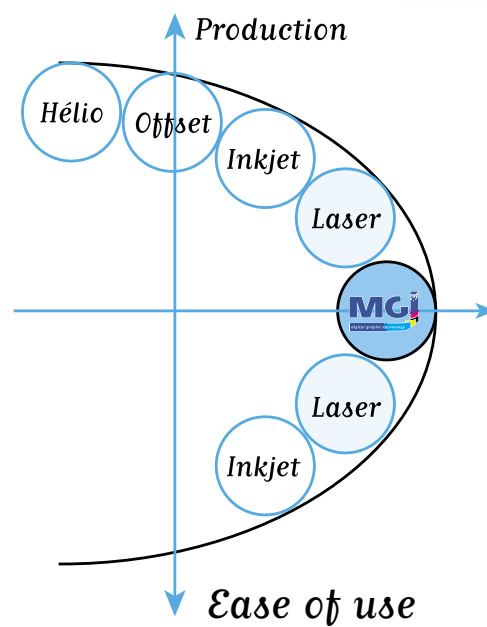
METEOR DP30/60, the convergence of 2 technologies serving printing on Paper and Plastic substrates.

A rapidly changing industry



Paper

A true convergence
Offset/Digital

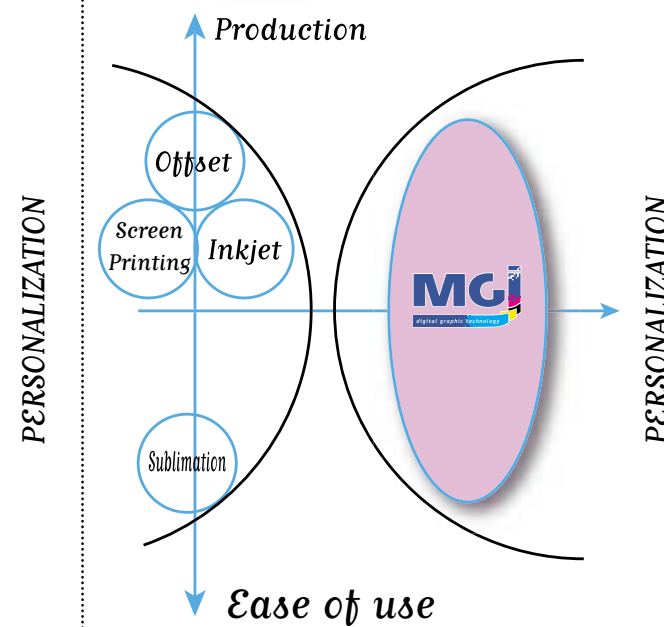


Applications (up to 300 Gsm - 170 Lb Index - 100 lb Cover)

- Commercial and technical documentation
- Advertising or promotional media (Small poster, POP..)
- Mailings, Coupons, Tickets
- Job printing (Announcements, Business cards, invitations Letterhead stationary, adhesive labels, etc...)

Plastic

A technological breakthrough
Plastic media (PVC)

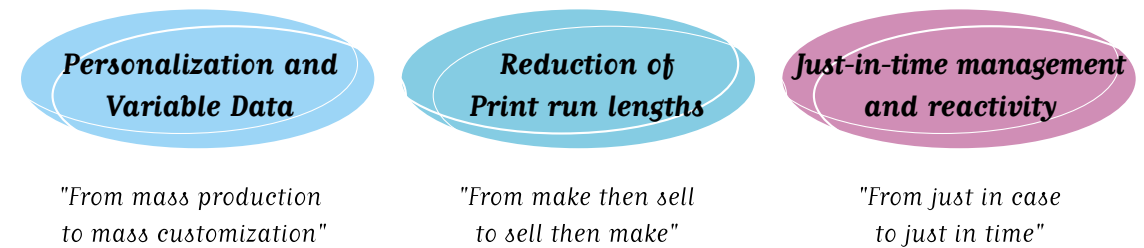


Applications (300 μ -microns - .12 Mills)
Lamination up to .30 mils

- Plastic Cards (Membership, ID cards, Access security, Gift cards, Insurance & Health Debit cards, Pre-paid cards, Time & Labor Tracking, etc...)
- Signs, Point of Sales material
- Packaging, Labels, Screens, etc...

A professional solution dedicated to the market's new expectations

The **METEOR DP30/60** product line represents real innovation, fruit of the convergence of digital and offset print technologies, dedicated to short and medium print runs, a rapidly expanding market segment (+33% per year = 2002/2005*).

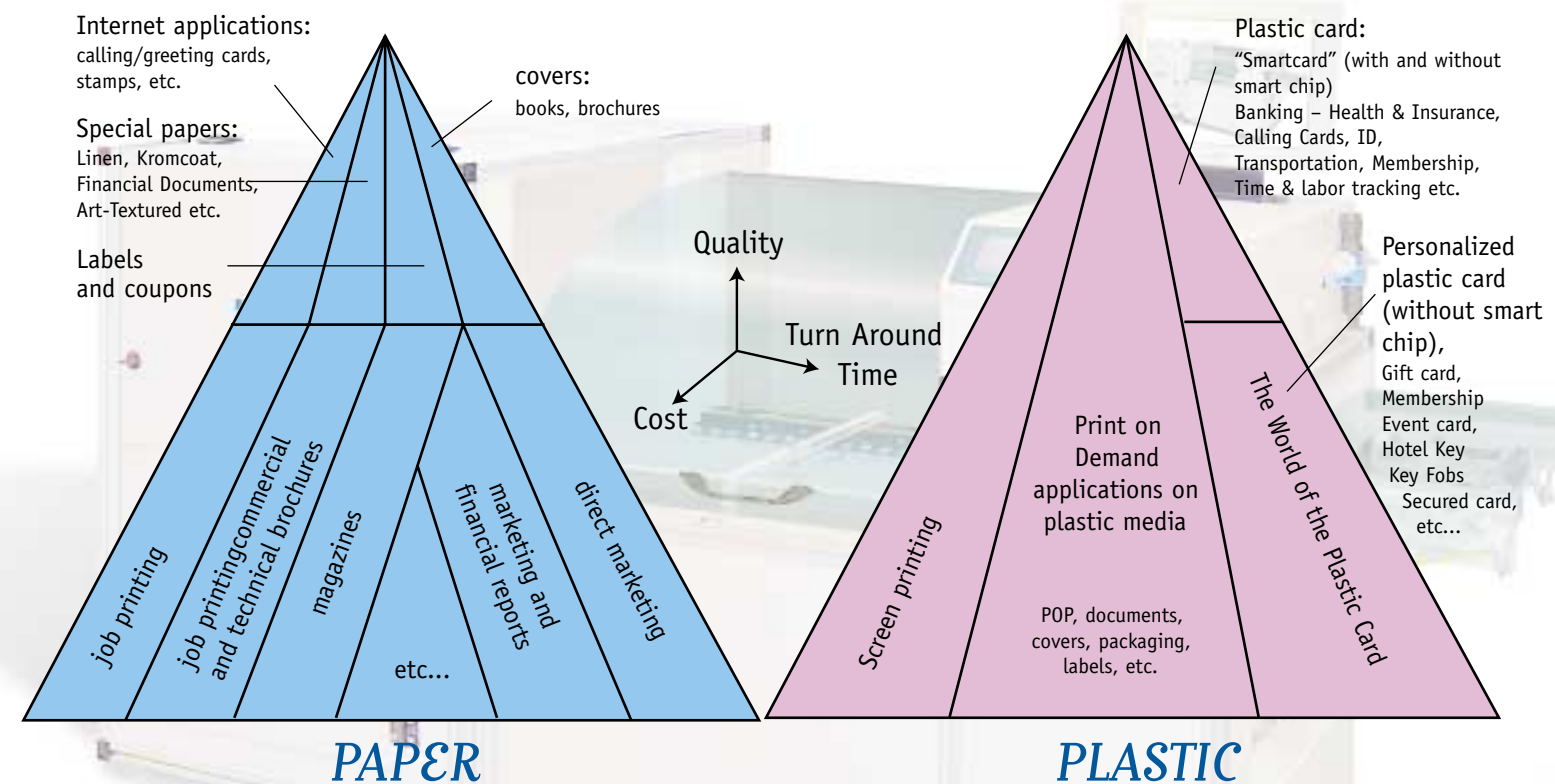


MGI allows you to transition from logic of volume to logic of value.
Resume skilled leadership.

Our business

- The design and manufacturing of Digital Print Solutions
- Expansion of the scope of applications through the improvement of the Cost-Turn Around Time-Quality triptych

→ Strong segmentation → Creation of new products → Creation of high value added



Principal segmentations of the types of jobs :

- local needs
- customization needs
- production needs

*Source Cap Venture

METEOR DP30/60, 360° Walk Around "We revolutionize Digital Thinking..."

1 LARGE CAPACITY PNEUMATIC LOADER

Loader with a capacity of up to 2000 sheets, Format 330 x 457 mm (13 x 18") with an air feed system allowing the vacuum insertion of **Paper substrates Up to 300 gsm – 170 Lb. Index - 100 lb Cover** (Bristol, Matte Coated Paper, Glossy Paper, Kromcoat, Linen...) and **Plastic substrates** (PVC, Polycarbonate, Polyester, Teslin®, Melinex®, etc...).

2 A REAL FEEDBOARD (Offset Feeder).

Technology resulting from Offset printing allowing high precision adjustment of the substrates, thus virtually eliminating skew and registration problems during printing.

3 DOUBLE SHEET DETECTION SYSTEM

An ultrasound sensor will detect double sheet feed. The double sheet is automatically deleted via the automatic ejection trap, allowing continuous print production.

4 HIGH QUALITY PAPER/PLASTIC PRINTING

Screen: 200 LPI, Resolution: 1800 DPI, allowing high definition print quality thanks to the fineness of the Offset screen. Color stability of the printing .

5 PAPER OUTPUT VIA CONVEYOR SYSTEM

Automatic extraction of printed sheets via conveyor belts and jogging table outside the print outputs for fluid reception without marks, ready for finishing jobs.

6 RIP: PRINT STATION MANAGER

Integrated RIP allowing complete Color management and integration of the RGB and CMYK profiles. Archiving and re-printing of jobs with the possibility of modifying all the size or colorimetry attributes. Professional calibration with Spectrodensitometer based on the substrates to be printed.

Software programs:

Variable Data processing software, importing of databases, variable text and image data, automatic numbering, bar code management, automatic multi-layout management

7 HIGH DEFINITION TONERS

A new generation of synthetic toner allows for high 4-Color print quality. Pantone® Certified.

8 FEED VIA MULTIFORMAT TRAYS

Feed via multi-format trays (A5, A4, A3+) of paper substrates from 70 to 256 Gsm (20 Lb. Bond to 94 Lb. Cover). Automatic duplex mode for paper substrates from 80 to 150 Gsm. (20 Lb. Bond to 55 Lb. Cover). See Technical Specifications.

9 2400 DPI SCANNER

2400 DPI scanner with integrated calibration allowing the reproduction of printed documents up to A3+ format (in copier mode).



METEOR DP30/60, "We revolutionize Digital Thinking" Digital Color Press for all your paper applications (up to 300 Gsm - 170 Lb. Index - 100 lb Cover).

The **METEOR DP30/60** meets all your current requirements for flexibility and cost effectiveness

This is the **new generation of professional digital presses** that conciliates the expectations of productivity, quality, cost-effectiveness, flexibility and reliability required for the Graphic Industry.

Expand your scope of applications thanks to the variety of paper substrates.

The use of the most varied paper substrates, **up to 300 grams – 170 Lb. Index - 100 lb Cover: Bristol, Matte, Glossy, CS1-CS2, Kromcoat, Linen, Art-Textured**, now offers you new application opportunities, sales and potential profitability.

Leaflets, Brochures, Advertising documents, Business cards, Stationery or even financial documents...you no longer sell simple color printing but **sophisticated documents with full Variable Data and Personalization**. You create real added value that translates into sales.

METEOR DP30/60 the power of personalization and variable data management!

The possibility of personalizing On-Demand printing is revolutionizing the printing industry

Thanks to the METEOR DP30/60, be pro-active and cost-effective, when managing the variable data for Short and Medium print runs for your customers.

Paper printing today: A rapidly changing market that demands

- Substrate flexibility, both with respect to quality, diversity and thickness.
- Print quality that holds it own against Offset.
- Reliability of the production tools for optimal print production.

The power of Variable Data: Target your customers personally and individually.

By personalizing printing, you allow your customers to address their targets and to communicate personalized information. Imagine: Personalized advertising documents, Automatic numbering, Bar codes, Alpha-numeric databases and photos on virtually any paper substrates of your choice.

- Variable Data management that is fast, easy and simple to implement
- A print cost that finally allows you to accelerate your Return On Investment and boost your bottom line.

Choose the flexibility & productivity of digital printing and boost your bottom line with the quality of traditional printing with MGI's METEOR DP30/60

APPLICATIONS



FINISHING UNIT

Multi Function Finishing Station 13X19"

Complete your workflow with MGI automatic finishing units. Shorten your turn-around times and increase your margins. The MGI automatic finishing units are autonomous and complementary to your digital, offset press or any other output device. Thanks to the modularity of their tools: Cutting, Slitting (single/double, horizontal and vertical), Scoring and Perforating are performed simultaneously (over 30 finishing combinations). You can imagine all styles of printed and finished documents.

User-friendly and simplified settings make the MGI Multi-Function finishing Station The Finishing station of choice.

VARIABLE DATA MANAGEMENT FROM BLACK & WHITE TO 4-COLOR

- Overprinting
- Automatic numbering
- Bar codes
- Photos
- Databases

A5 – A4 – A3+
330 x 457 mm
or 13 x 18"
Up to 300 Gsm
or 170 Lb.
Index



METEOR DP30/60, the Digital Printing revolution in the Plastic market and substrates (PVC, Polycarbonate, Polyester, Teslin®, etc.)

The only digital press that allows the transfer of paper print technology to plastic media

METEOR DP30/60 marks a real break away from the current market by allowing printing on plastic with the same quality as digital printing on paper. It allows you to Personalize and manage Variable Data simultaneously while printing on plastic substrates.

The competitive advantages of digital printing on plastic.

Innovation, creativity, differentiation, added value, profitable growth factor.

Resistant, tear-proof, unalterable, printing on plastic opens up new application, opportunities and profitability options for you.

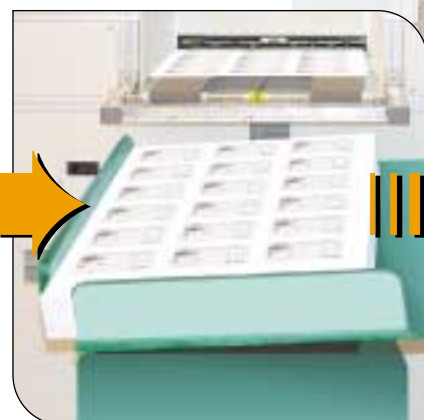
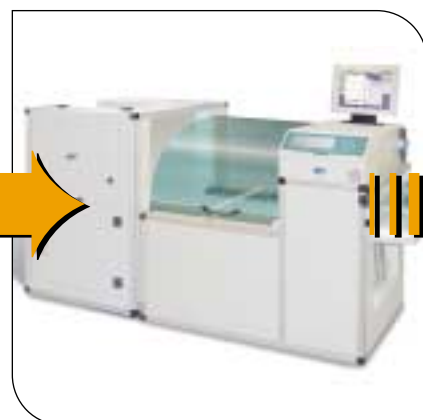
METEOR DP60 a few highlights:

- Maximum speed: 30 PVC sheets A3+ (300 µ/min or .12 Mils)
- Standard Plastic Substrates (non coated PVC 300 µ - .12Mil)
- 15,000+ cards Per hour – 4-Color (CR-80 credit card ISO format)
- Lower production cost than traditional print technologies, ease of operation and virtually no make-ready time.

VARIABLE DATA MANAGEMENT FROM BLACK & WHITE TO 4-COLOR

- Overprinting
- Automatic numbering
- Bar codes
- Photos
- Databases

Join the revolution in digital printing on Plastic substrates for more flexibility and profitability than with traditional printing. "We revolutionize the Digital Thinking..." METEOR DP30/60



APPLICATIONS



Membership cards
Customer loyalty cards



Personalized smart cards,
variable data,



Secured cards, / HiCo -
Loco magnetic stripes



Event cards,
variable data



Pre-paid cards,
variable data



Personalized cards,
variable data



Point Of Sales material



Business cards



Badges,
ID cards, Passes



Access cards,
Hotel keys



Key fobs



Luggage tags



Display Advertising



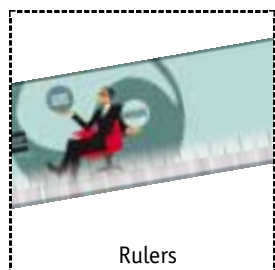
Signage



Identification bracelets



Parking passes



Rulers



Place Mats



Tent cards



Small posters



Calendars



Mouse pads

FINISHING & CONVERTING PRODUCTS LINE :

PressCard®



PressCard® is an industrial production unit dedicated to the lamination of plastic substrates (PVC, Polycarbonate, etc.). The unique technology integrated in

PressCard® includes individual heating, cooling and pressure control circuits for the manufacture of plastic cards, POP, labels, signage, etc. This compact and professional hot lamination press operates with a fast cycle. For example, it can produce from 1,000 to 1,400+ cards per hour (depending on the thickness) and is fully automated.

PunchCard

PunchCard® is a stand-alone automatic finishing unit for plastic cards. PunchCard® cuts out each sheet into 21 or 24 cards of ISO / CR-80 (85.5 x 54mm) format with rounded corners and thickness of up to 0.75 mm or 30 mils (750 microns).

Reading crop marks using integrated fiber optics ensures precision die cutting of the cards. The cards are automatically retrieved in the chimney stackers. (4,000+ cards per hour)

MGI, an R&D center serving the Graphic Arts world, with constant innovations dedicated to the market's expectations.

With the **METEOR DP30/60**, MGI satisfies the needs and expectations of the market.

A unique concept:

The **METEOR DP30/60** is offered in 2 versions:

- Meteor DP30: 30 pages/minute (paper / plastic) version
- Meteor DP60: 60 pages/minute (paper / plastic) version

Making it possible to print up to 1,800 to 3,600 A-4 / Letter, 4-Color pages an hour (2 Up).

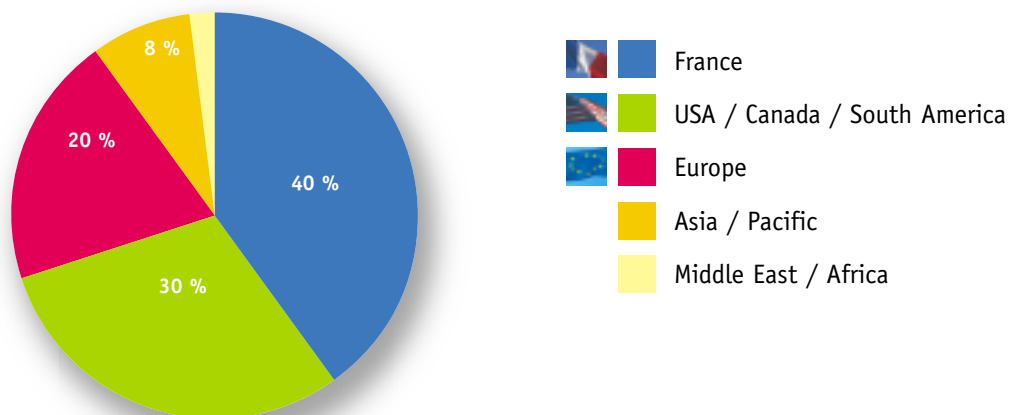
With a unique modular architecture, the **METEOR DP** line offers you the solution that meets your needs. If your print volumes are growing, you can upgrade your **METEOR DP30** digital press (1,800 A4/Letter pages/hour) into a **METEOR DP60** (3,600 A4/Letter pages/hour) by adding an additional group and thus increase your productivity without jeopardizing your initial investment and your profitability.

MGI is also a Research and Development center recognized by numerous awards.

MGI has always designed and developed its line of products by taking the market requirements into account. Its knowledge and understanding of the Graphic Arts industry allows the MGI to analyze developing needs and trends in order to offer solutions with a high added value, a convergence of MGI's know-how with market's expectations.

By being constantly attuned to the needs of Graphic Arts professionals and large companies, MGI can thus provide innovative and high performance solutions to the market.

MGI, an international presence



MGI, know how and ambition.

With this new generation of digital presses, MGI's ambition is to become a major player in the digital printing market. The solutions proposed by MGI offer a real alternative to the big names in the digital industry. By combining digital and offset printing know-how and offering exemplary flexibility, productivity and modularity, the **METEOR DP** line is positioning itself in the major players' market.

Additional MGI "Signature" services.

- Installation
- Operators training
- Customer Support and On site launch of the equipment and work flow integration, particularly for complex applications.
- Maintenance
- Hot line
- A team of dedicated Field Service Engineers.
- A complementary line of finishing solutions.

An entire line of Digital Presses to meet your specific needs.

Printing for the Short & Medium print runs

MasterCity®



Master City® is a small format professional Digital Press; it allows exceptional color print quality (2400 DPI, up to 220 LPI, Pantone® certified), a wide variety of substrates and weights (up to 300 Gsm - 170 Lb. Index), with production flexibility that is perfectly suited to your expectations.

PlastiCard



PVC, Polyester, Teflon, Vinyl, Lucan, Polycarbonate ...

PlastiCard® is a professional Digital Color Press dedicated to print on plastic substrates for the Short and Medium Run, high definition (2400 DPI & 150 LPI, Pantone® certified), A3++ (330.2 x 482.6 mm or 13' X 19') format. RIP Print Station Manager includes colorimetric calibration software, spectrophotometer and variable data management (Bar code, Auto numbering, Databases, Photos, etc.)



Know-how recognized worldwide.



Neş d'Or - CCIP



Sippa d'or



Gold Medal International Fair Graphic Art Poland

Poznam International Fair